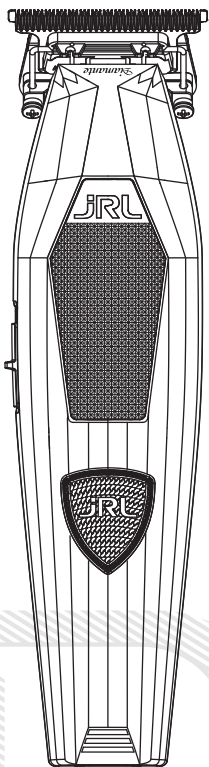


Diamante

2025T

Professional Cordless Hair Trimmer

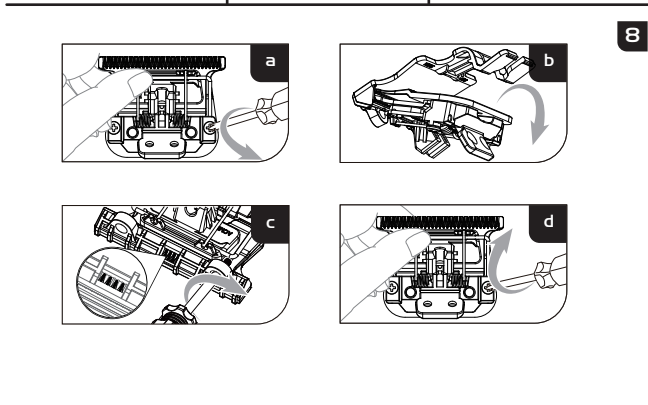
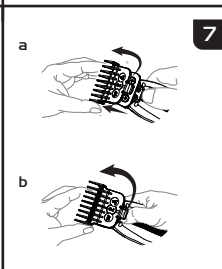
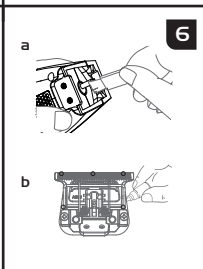
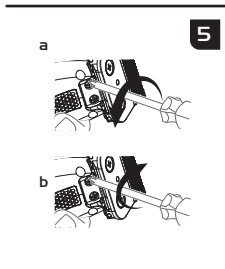
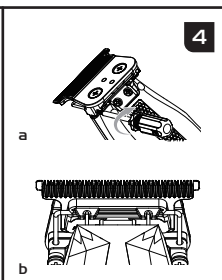
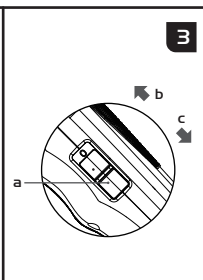
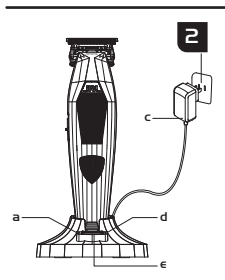
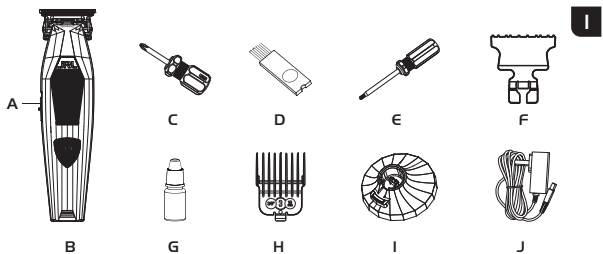


PATENTS:

2025 3017 3206.3
2023 1168 3285.9
2023 2335 0574.5
2020 2310 2170.0
2022 2353 3128.3
2020 3024 4731.7
2025 2074 5333.0

USER'S MANUAL





Tips

1. This product is designed for professional use only. This machine is not designed to be used on synthetic hair or for any other purpose other than cutting 100% human hair.
2. The company will not take responsibility for malfunction or damages caused by misuse.
3. The safety instructions and the operating manual are also available in PDF format from our website: www.jrl.com.

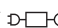
Safety precautions

Keep Away from Children:

Please store trimmer away from children.

Trimmer contains sharp blades and small parts that can be harmful to minors.

Safety Use:

1. This appliance can be used by children aged from 8 years and above and persons with reduced physical, sensory or mental capabilities or lack of experience and knowledge if they have been given supervision or instruction concerning use of the appliance in a safe way and understand the hazards involved.
2. This appliance is not intended for use by persons (including children) with reduced physical, sensory or mental capabilities, or lack of experience and knowledge, unless they have been given supervision or instruction concerning use of the appliance by a person responsible for their safety.
3. Children shall not play with the appliance.
4. Cleaning and user maintenance shall not be made by children without supervision.
5. The appliance is only to be used with the power supply unit provided with the appliance.
6. **WARNING:** Keep the appliance dry.
7. This appliance contains batteries that are non-replaceable.
8. Unplug the power adapter before cleaning the trimmer.
9. Remove the blade first then use cleaning brush to remove any hair buildup.
10. Keep away from water in order to avoid shock or damage the trimmer.
11. If the trimmer is accidentally dropped into water or any other chemicals, discard immediately. Do not try to dry it and plug it into a power source.
12. To properly store, remove trimmer from dock, unplug adapter, and thoroughly clean your unit. Do not store the trimmer on the charging dock or leave it attached to the adapter.
13. If the cord on the power adapter is damaged, stop using immediately and replace right away.
14. Do not disassemble this product on your own. Visit authorized dealers for service and repair.
15. Choose the correct voltage socket before charging (AC100-240V 50/60Hz).
16. Please do not twist, disassemble or puncture the rechargeable battery within the trimmer, otherwise it may cause a short circuit or burn the machine. If the battery is not working, do not run the trimmer and take it to an authorized dealer.
17. Extended use in temperatures below -10°C or above 40°C is not recommended as it may damage the battery.
18.  detachable power supply part (apply to KA1201A-0502000EU/KA1201A-0502000BS/KA1201A-0502000AU model adapter)
19. Type of battery: Lithium ion battery
20. Dispose of used batteries according to local regulations. Do not throw into household waste; use proper recycling or collection points.
21. Avoid contact with leaking material. If contact occurs, rinse with water and seek medical advice. Use gloves and dispose of safely.
22. Do not expose the appliance or battery to excessive temperatures
23. Be aware of the risk of terminals of the battery-operated appliance or battery being short-circuited by metal objects.

To Avoid Product Damage:

1. Only use original accessories.
2. Do not sharpen the blade on your own.
3. **WARNING:** For the purposes of recharging the battery, only use the detachable supply unit provided with this appliance.

Product overview (Fig.1)

- | | | |
|-------------------|---------------------------------|---------------------------|
| A. Power Switch | E. Blade Adjustment Tool | I. Reset IQ Charging Dock |
| B. Trimmer Unit | F. Blade Protector | J. Charger Adapter |
| C. Screwdriver | G. Lubricating Oil | |
| D. Cleaning Brush | H. Set of 5 Guards (1.5mm-10mm) | |

Product specifications

Product code: 2025T			
Item	Specifications	Item	Specifications
Power adapter	Input AC 100-240V 50/60Hz	Type of battery	Lithium ion battery
	Output DC 5V 2A	Charging time	2 Hours for Fast Charging 3 Hours for Reset IQ Charge
Battery capacity	3.7V 2000mAh	Usage time	2 hours

The power consumption in standby model with display is 0,72W

When the battery is fully charged, it will immediately enter the standby model with display "4 HOURS".

How to charge your trimmer

Important: Use only original power cord to charge.

You can charge your unit on the portable charging dock, or charge the trimmer directly by plugging the power cord to the trimmer itself. (Fig.2a/b)



Note: When the trimmer is low on charge, the adapter can be plugged onto the trimmer directly. You may use the trimmer while it is charging.

LED Status Indicators

- Red Flashing Light: Less than 10 minutes of battery
- White Flashing Light: Charging (more than 10 minutes of battery)
- Solid White Light: Fully charged

Reset IQ Technology Charge

Connect charging dock to the power adapter,  green light (Fig.2d) turns on. When charging, **JRL** warning light flashes in green and the **JRL** white light will remain on once fully charged.

Using the Reset IQ Charge will extend the life of battery and take about 3 hours to fully charge.

Fast Charging Method

Press the button  once on charging dock to switch to fast charge,  blue light (Fig.2a) turns on. When charging, **JRL** warning light flashes in white and the **JRL** white light will remain on once fully charged.

The set mode rapid Fast Charging Method  takes approximately 2 hours.

Note: Using an incorrect power adapter may result in extended charging time.

Operation & Speed Settings

Switching and shifting instructions

Push the switch to turn the trimmer on and off (Fig.3a/b/c).

O: Shut down

I: Power on, 8200 RPM

LED will indicate power status:

- White = high power mode
- Red = medium power mode
- Flashing Red = battery low
- Auto shut-off occurs when battery is depleted

Blade Adjustment & Zero-Gapping

To adjust blade length to 0mm:

- Ensure trimmer is turned off and unplugged.
- Use the blade adjustment tool to align blades (Fig.4a–b).
- Confirm upper and lower blades are centered and parallel.

To reset blade alignment:

1. Remove the blade and loosen both screws (Fig.8a)
2. Attach blade protector (Fig.8b)
3. Adjust blade position clockwise with screwdriver (Fig.8c)
4. Ensure no overbite, then tighten screws (Fig.8d)

Blade maintenance

Note: 1. Please read the blade maintenance instructions carefully before operating. Follow the instructions when removing and installing the blade to avoid improper assembly.

2. After the blade is installed, be sure to carefully check whether the corresponding parts have been firmly attached.
3. Before operating, please unplug the power adapter and turn off the trimmer.
4. When handling the blade, do not try to sharpen or alter the blade by yourself to avoid damaging your trimmer.

Removing your blade

As shown in Figure 5a, hold the device with one hand and use a screwdriver to loosen the screws to remove the blade. (When removing the blade, hold it securely with the same hand to prevent it from falling and getting damaged.)

Installing your blade

As shown in Figure 5b, align the screw holes between the blade and the trimmer body, then tighten the screws with a screwdriver to install the blade. (Ensure the blade is securely fastened with no looseness after installation.)

Blade cleaning and maintenance

Fig.6a: Use a brush to clean the main unit & the hair debris on the blade.

Fig.6b: Drop 1–2 drops of lubricant oil to the corresponding five areas.

Guard Installation & Removal

Trimmer comes with 5 guards, 1/2# (1.5 mm), 1# (3 mm), 2# (6 mm), 2-1/2# (8 mm), 3#(10 mm)



WARNING:

Make sure the trimmer is off and the guard is securely fastened before use.

Make sure the guard is installed properly, and is not loose before use.

- To install (Fig.7a): Align the guard slot with the trimmer body and press gently until you hear a click.
- To remove (Fig.7b): Turn the guard's tail and lift away.



**Guang Zhou Eagle Fortress
Hair Products Ltd.**

No.4 Shuanglong Yucai
Street, Shiling Town, Huadu
District, Guangzhou, 510899
China



www.jrl.com

Bratt Trading AB

Radiövägen 34
135 48 Tyresö SWEDEN
+46 (8) 712 95 10
info@bratt-trading.se
www.bratt-trading.com



www.bratt-trading.com

